

Orona 3G

X-25

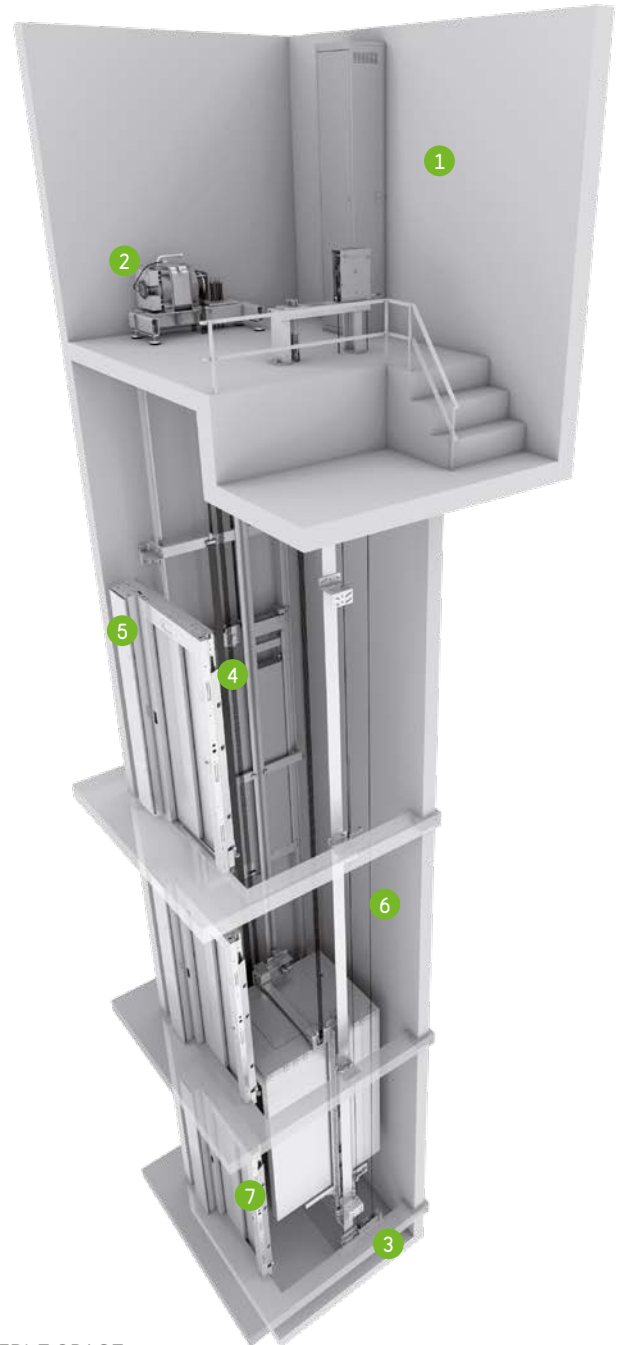
Machine-room above electrical gearless solutions

High efficiency for residential and public buildings.
Optimum use of space and latest direct drive (gearless) technology.
The customised solution.
Maximum flexibility and performance.

General specifications

| | |
|-----------------------|---|
| Load | 320 to 1,000 kg |
| Capacity | 4 to 13 persons |
| Speed | 1 - 1.6 m/s |
| Maximum travel | 50 - 60 m |
| Maximum floors served | 16 - 21 floors |
| Entrances | 1 front / 2 open through |
| Drive system | Direct gearless |
| Controller | ARCA II controller, low energy consumption multiprocessor |
| Door types | Automatic side-opening / Automatic central-opening |
| Clear door opening | From 600 to 1,500 mm (in 100 mm increments) |
| Door height | 2,000 / 2,100 / 2,200 / 2,300 mm |
| Car dimensions | Parametric car dimensions |
| Internal car height | 2,100 / 2,200 / 2,300 / 2,400 mm |
| Aesthetic solutions | Orona 3G Domo Packs / Orona 3G Public Packs / Orona 3G Plus |

Standard Optional



1 MACHINE-ROOM

A traditional solution simplifying lift maintenance.



2 DRIVE

Compact, quiet, gearless, energy efficient, speed regulated (VVVF) permanent magnet electric motor.



3 ACCESSIBLE SPACE BELOW THE PIT

Adapts the lift to suit buildings which have an accessible space below the pit (optional).



4 TRACTION ROPES

Orona small diameter ropes replace traditional steel ropes. As a result of their lighter weight, longer lifespan and greater flexibility, it is possible to use a more compact, efficient and eco-friendly gearless machine.



5 DOORS

Compact permanent magnet motor for fast, accurate and quiet door operation giving the most advanced performance. Advanced door opening and full height infra red door protection edges. Optional Solid Door for high flow situations.



6 PARAMETRIC/FLEXIBLE

Flexible car and door configurations ensure available shaft dimensions can be optimised (optional).



7 AUTOMATIC RESCUE SYSTEM

With floor level indication to ensure fast, efficient and safe evacuation of passengers in the event of an emergency. As an option, the system can incorporate a fully-automatic rescue device to evacuate passengers in the event of a power failure.



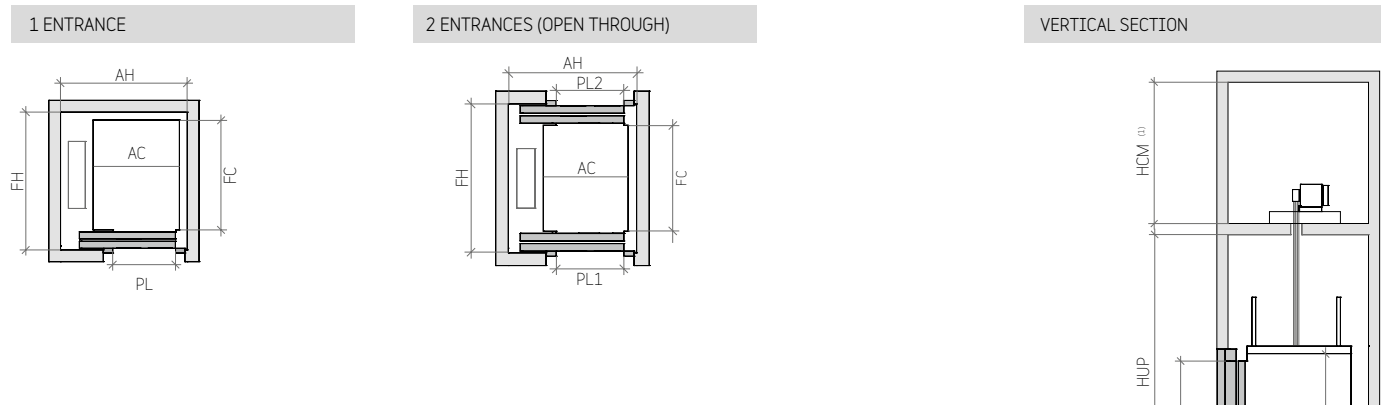
Standard dimensions

| Load / capacity | | | Car | | | Lift shaft * | | | | | | | |
|-----------------|----------|--------|----------|----------|------------------|----------------------|----------------------|-----------------------|-----------------------|-----------------------|-----------------------|--------------------------|---------------------------|
| Speed | Persons | Q Load | AC Width | FC Depth | PL Clear opening | Entrances | | Side-opening doors | | Central-opening doors | | HF Pit | HUP Headroom |
| | | | | | | Accessibility | No. of entrances | AH ¹ Width | FH ² Depth | AH Width | FH ³ Depth | | |
| 1 m/s | 4 | 320 kg | 825 | 1,100 | 700 | | 1 | 1,300 | 1,350 | | | 1,000 (830) ⁴ | 3,400 (3050) ⁵ |
| | | | | | | | 2 x 180 ⁰ | | 1,500 | | | | |
| | 6 | 450 kg | 1,000 | 1,250 | 800 | ♿ | 1 | 1,450 | 1,500 | 1,725 | 1,450 | | |
| | | | | | | | 2 x 180 ⁰ | | 1,650 | | 1,550 | | |
| | 8 | 630 kg | 1,100 | 1,400 | 900 | | 1 | 1,600 | 1,675 | 1,925 | 1,625 | | |
| | | | | | | | 2 x 180 ⁰ | | 1,850 | | 1,750 | | |
| | 10 | 800 kg | 1,350 | 1,400 | 900 | ♿ | 1 | 1,825 | 1,675 | 1,925 | 1,625 | | |
| | | | | | | | 2 x 180 ⁰ | | 1,850 | | 1,750 | | |
| 13 | 1,000 kg | 1,600 | 1,400 | 1,000 | | 1 | 2,075 | 1,675 | 2,150 | 1,625 | | | |
| | | | | | | 2 x 180 ⁰ | | 1,850 | | 1,750 | | | |
| | 1,000 kg | 1,100 | 2,100 | 1,000 | | 1 | 1,775 | 2,375 | 2,125 | 2,300 | | | |
| | | | | | | 2 x 180 ⁰ | | 2,550 | | 2,400 | | | |
| 1.6 m/s | 4 | 320 kg | 825 | 1,100 | 700 | | 1 | 1,325 | 1,350 | | | 1,120 | 3,550 |
| | | | | | | | 2 x 180 ⁰ | | 1,500 | | | | |
| | 6 | 450 kg | 1,000 | 1,250 | 800 | ♿ | 1 | 1,475 | 1,500 | 17,25 | 1,450 | | |
| | | | | | | | 2 x 180 ⁰ | | 1,650 | | 1,550 | | |
| | 8 | 630 kg | 1,100 | 1,400 | 900 | | 1 | 1,625 | 1,675 | 1,925 | 1,625 | | |
| | | | | | | | 2 x 180 ⁰ | | 1,850 | | 1,750 | | |
| | 10 | 800 kg | 1,350 | 1,400 | 900 | ♿ | 1 | 1,850 | 1,675 | 1,925 | 1,625 | | |
| | | | | | | | 2 x 180 ⁰ | | 1,850 | | 1,750 | | |
| 13 | 1,000 kg | 1,600 | 1,400 | 1,000 | | 1 | 2,100 | 1,675 | 2,175 | 1,625 | | | |
| | | | | | | 2 x 180 ⁰ | | 1,850 | | 1,750 | | | |
| | 1,000 kg | 1,100 | 2,100 | 1,000 | | 1 | 1,775 | 2,375 | 2,125 | 2,300 | | | |
| | | | | | | 2 x 180 ⁰ | | 2,550 | | 2,400 | | | |

- 1 Accessible space below the pit (counterweight with safety gear) add 115 mm to AH
- 2 Shaft depth with door tracks projecting 60 mm on the landing
- 3 Shaft depth with door tracks projecting 40 mm on the landing

- 4 HF reduced pit optional 830 mm
- 5 HUP minimum for internal car height (HC) 2,100 mm
HUP reduced headroom optional. Consult availability of car dimensions
- * Minimum plumb measurements

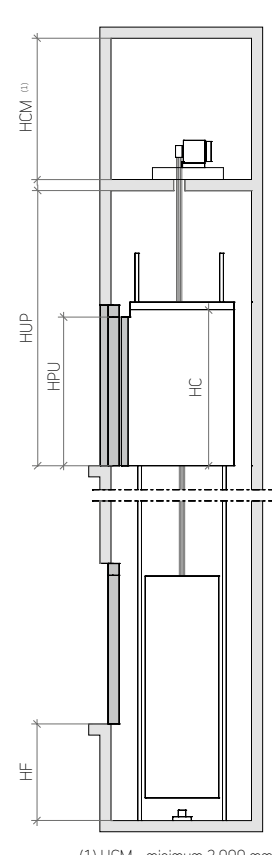
Layout



Customised car dimensions

| Car width | | | | | | | | | | | Car depth | | | | | | | | | | |
|-----------|-------|-------|-------|-------|-------|-------|-------|-------|-------|-------|-----------|-----|-----|-----|-----|-------|-------|-------|-------|-------|-------|
| | | | | | | | | | | | 1,600 | | | | | | | | | | |
| | | | | | | | | | | | 1,500 | | | | | | | | | | |
| | | | | | | | | | | | 1,400 | | | | | | | | | | |
| | | | | | | | | | | | 1,300 | | | | | | | | | | |
| | | | | | | | | | | | 1,200 | | | | | | | | | | |
| | | | | | | | | | | | 1,100 | | | | | | | | | | |
| | | | | | | | | | | | 1,000 | | | | | | | | | | |
| | | | | | | | | | | | 900 | | | | | | | | | | |
| | | | | | | | | | | | 800 | | | | | | | | | | |
| 2,100 | 2,000 | 1,900 | 1,800 | 1,700 | 1,600 | 1,500 | 1,400 | 1,300 | 1,200 | 1,100 | 1,000 | 600 | 700 | 800 | 900 | 1,000 | 1,100 | 1,200 | 1,300 | 1,400 | 1,500 |

Note:
Car width and depth variable in increments of 5 mm.
For simplification, table samples show increments of 100 mm.



(1) HCM - minimum 2,000 mm