

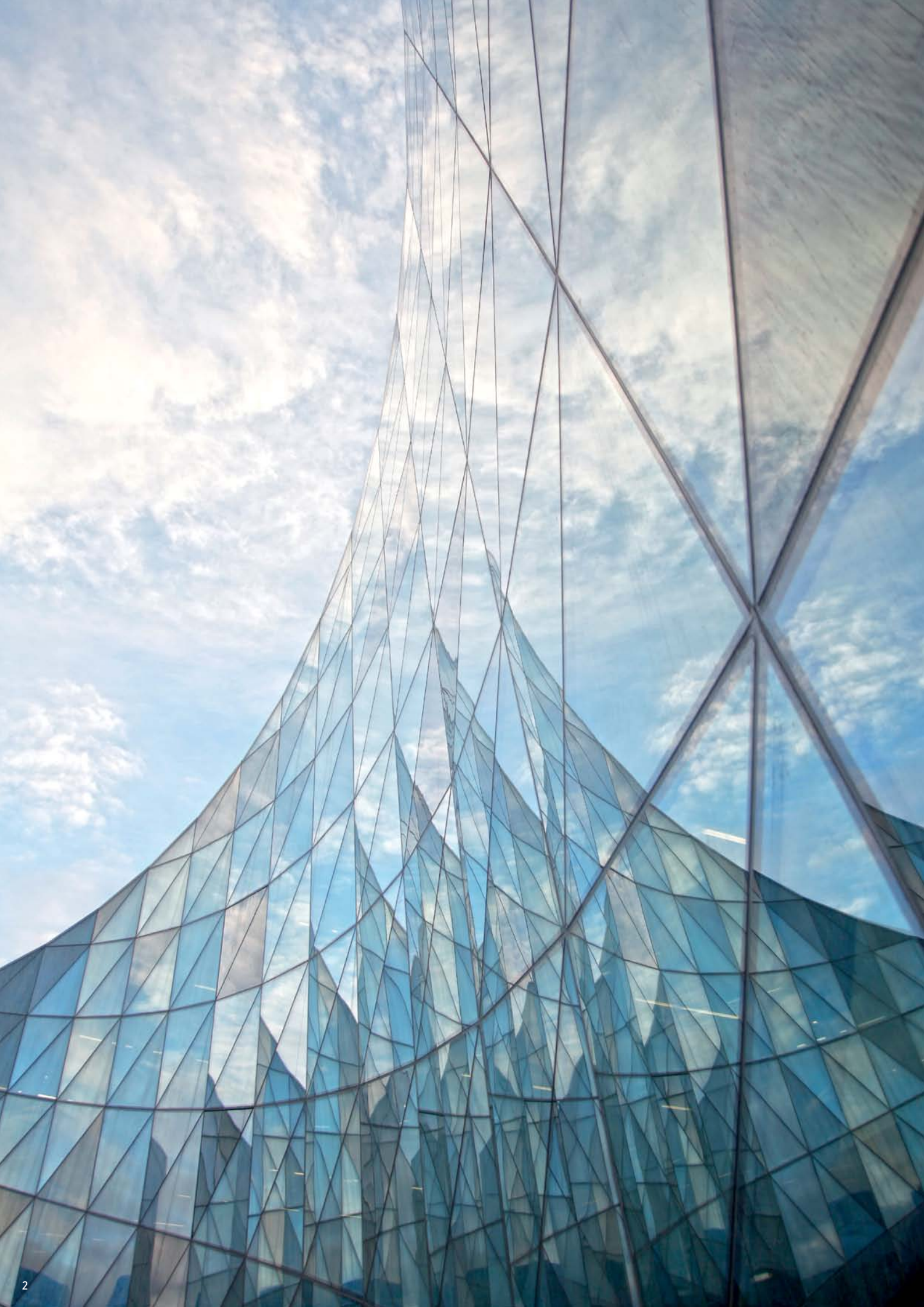


Orona

Orona 3G

Aesthetic Solutions





Orona 3G

Aesthetic Solutions

ORONA 3G DOMO SERIES

Packs Reference

DR1	5
DR2	6
DR3	7
DR4	8
DR5	9
DR6	10
DR7	11
DR8	12

Packs Selection

DS1	13
DS2	14
DS3	15
DS4	16
DS5	17

ORONA 3G PUBLIC SERIES

Packs Reference

PR1	22
PR2	23
PR3	24
PR4	25
PR5	26

Packs Selection

PS1	27
PS2	28
PS3	29
PS4	30
PS5	31
PS6	32
PS7	33
PS8	34
PS9	35

Orona 3G Plus	38
---------------------	----

Orona 3G

Domo PACKS

Packs Reference



DR1



DR2



DR3



DR4



DR5



DR6



DR7



DR8

Packs Selection



DS1



DS2



DS3



DS4



DS5



DR2





DR4









DR8





DS2





DS4





Orona 3G Domo Packs

CONTROL PANEL



LANDING INDICATOR



7 segment



Dot-matrix



TFT

LANDING PUSHBUTTONS



Pushbutton suited to the selected control (1 or 2 pushbuttons)



Key switch pushbutton (standard or eurocylinder)



Wall pushbutton

DR1 DR2 DR3 DR4 DR5 DR6 DR7 DR8 DS1 DS2 DS3 DS4 DS5

CEILING AND LIGHTING

MODEL	Fluorescent lights	UP17			•				•					
		UP19	•			•	•		•	•				
		UP23		•										
	LED Spotlights	UP31									•			
UP37		•	•	•	•	•	•	•	•	•	•	•	•	
	LED panel (200 x 200 mm)	UP41								•				
CEILING MATERIAL	ST01 St St Base		•	•	•	•	•	•	•	•	•	•	•	
	ST02 St St Plus		•	•	•	•	•	•	•	•	•	•	•	
OTHERS	Automatic lighting switch-off		•	•	•	•	•	•	•	•	•	•	•	
	Emergency hatch		•	•	•	•	•	•	•	•	•	•	•	
	Fan		•	•	•	•	•	•	•	•	•	•	•	

CAR WALLS

PANELS	Neocompact Colour	NC02 Red Autumn			•P								
		NC03 White Snow	•	•	•	•		•	•				•
		NC05 Blue Berry		•P									
		NC08 Yellow Sunset					•						
		NC09 Green Orana				•P						•	
	Neocompact Wood	NC11 Cherry Tree						•F			•		
		NC16 Linen Pure									•		
	Neocompact Texture	NC17 Grey Storm									•		
		NC18 Night Garden						•F					•F
		NC19 White Garden					•P					•P	
Panel Stainless	ST01 St St Base											•	
	ST02 St St Plus											•	
Others	Without cladding	•	•	•	•	•	•	•	•	•	•	•	
	Tip-up seat	•	•	•	•	•	•	•	•	•	•	•	
	2 Entrances or 'Through car' for 180, 'Front/Adjacent' for 90&270	•	•	•	•	•	•	•	•	•	•	•	

CONTROL PANELS AND INDICATORS

CAR INDICATOR	7 Segment	•	•	•	•	•	•	•	•				
	Dot-matrix									•	•		•
	TFT											•	
	Car direction arrows	•	•	•	•	•	•	•	•	•	•	•	•
	Overload indicator (buzzer & light)	•	•	•	•	•	•	•	•	•	•	•	•
	Direction arrows on entrance return	•	•	•	•	•	•	•	•	•	•	•	•
	Car gong	•	•	•	•	•	•	•	•	•	•	•	•
	Voice synthesizer	•	•	•	•	•	•	•	•	•	•	•	•
	Inductive acoustic coupler	•	•	•	•	•	•	•	•	•	•	•	•
CONTROL PANEL MATERIAL	ST01 St St Base	•	•	•	•	•	•	•	•	•	•	•	
	ST02 St St Plus	•	•	•	•	•	•	•	•	•	•	•	
CAR PUSHBUTTONS	Door close pushbutton	•	•	•	•	•	•	•	•	•	•	•	
	Braille pushbutton	•	•	•	•	•	•	•	•	•	•	•	
	Key switch pushbutton (Standard or eurocylinder)	•	•	•	•	•	•	•	•	•	•	•	
	External call cancelling	•	•	•	•	•	•	•	•	•	•	•	
	Coded call	•	•	•	•	•	•	•	•	•	•	•	
LANDING INDICATOR	7 Segment	•	•	•	•	•	•	•	•	•	•	•	
	Dot-matrix									•	•	•	
	Next lift indicator	•	•	•	•	•	•	•	•	•	•	•	
	Landing gong	•	•	•	•	•	•	•	•	•	•	•	
LANDING PUSHBUTTONS	Key switch pushbutton (Standard or eurocylinder)	•	•	•	•	•	•	•	•	•	•	•	
	Wall pushbutton	•	•	•	•	•	•	•	•	•	•	•	

MIRRORS

MIRRORS	MH (Mirror 1/2)	•F	•F	•F	•F	•F	•F	•F	•F				
	MT (Mirror 3/4 narrow)									•F	•F	•F	•F
FINISH	Rear-view mirror (EN 81-70)	•	•	•	•	•	•	•	•	•	•	•	
	01 Clear	•	•	•	•	•	•	•	•	•	•	•	

HANDRAILS

HANDRAILS	HR01 (Aluminium pipe)	•L	•L	•L	•L	•L	•L	•L	•L				
	HR02 (Aluminium pipe)									•F/L	•F/L		•F/L
	HR04 (Stainless steel pipe)											•F/L	•F/L

FINISHES

SKIRTINGS	SK01 Anodized Aluminium (St St finish)	•	•	•	•	•	•	•	•	•	•	•	•
DOOR MATERIALS (car and landing)	ST01 St St Base	•	•	•	•	•	•	•	•	•	•	•	•
	ST02 St St Plus	•	•	•	•	•	•	•	•	•	•	•	•
	Primed sheet (landing door)	•	•	•	•	•	•	•	•	•	•	•	•
DOOR PANEL TYPE	Standard panel (not big vision)	•	•	•	•	•	•	•	•	•	•	•	

FLOORS

SC-PVC HIGH	SC03 Grey Ice		•		•							•	
	SC04 Grey Storm					•		•			•		•
	SC05 Grey Silver	•		•					•				•
	SC06 Beige Sand						•						
OTHERS	Prepared for granite	•	•	•	•	•	•	•	•	•	•	•	•
	Prepared for PVC	•	•	•	•	•	•	•	•	•	•	•	•



1



Orona 3G

Public PACKS

Packs Reference



PR1



PR2



PR3



PR4



PR5

Packs Selection



PS1



PS2



PS3



PS4



PS5



PS6



PS7



PS8



PS9

PR1









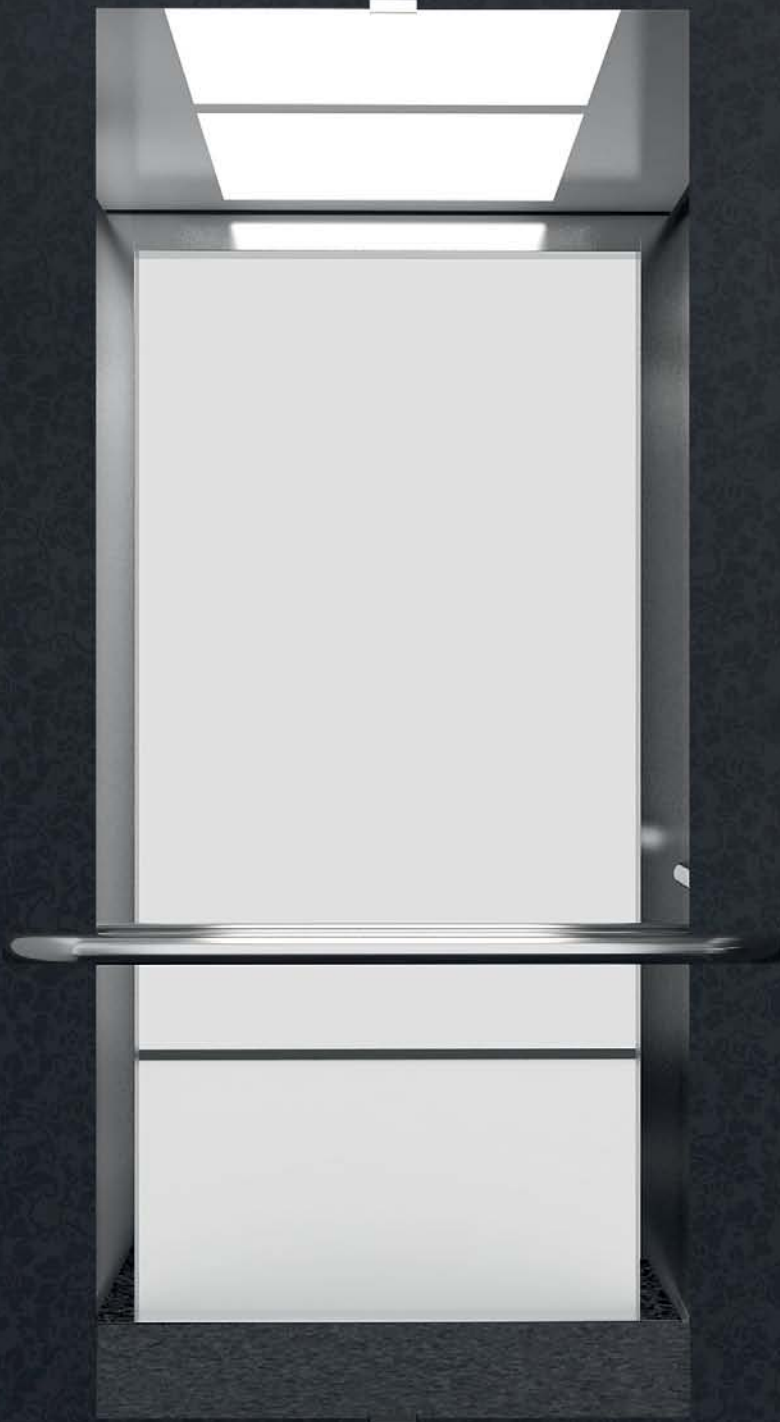
PR5













PS6





PS8





Orona 3G Public Packs

CONTROL PANEL



LANDING INDICATOR



7 segment



Dot-matrix



TFT

LANDING PUSHBUTTONS



Pushbutton suited to the selected control (1 or 2 pushbuttons)



Key switch pushbutton (standard or eurocylinder)



Wall pushbutton

PACKS
REFERENCE

PACKS
SELECTION

PR1 PR2 PR3 PR4 PR5 PS1 PS2 PS3 PS4 PS5 PS6 PS7 PS8 PS9

CEILING AND LIGHTING

MODEL	LED Spotlights	UP31	●	●														
		UP37	○	○	●	○	●	○	○	○	○	○	○	○	○	○	○	○
	LED panel (200 x 200 mm)	UP41				●			●				●					
		UP43							●		●					●	●	
	LED panel (600 x 600 mm)	UP47										●						
		UP53											●					●
CEILING MATERIAL	ST01 St St Base		●	●	●	●	●	○	○	○	○	○	○	○	○	○	○	○
	ST02 St St Plus		○	○	○	○	○	○	○	○	○	○	○	○	○	○	○	○
OTHERS	Automatic lighting switch-off		●	●	●	●	●	●	●	●	●	●	●	●	●	●	●	●
	Emergency hatch		○	○	○	○	○	○	○	○	○	○	○	○	○	○	○	○
	Fan		○	○	○	○	○	○	○	○	○	○	○	○	○	○	○	○

CAR WALLS

PANELS	Neocompact Colour	NC03 White Snow		●				●P	●		●P		●P			●L			
		NC05 Blue Berry				●P													
		NC09 Green Orona				●								●					
	Neocompact Wood	NC11 Cherry Tree		●					●	●F									
		NC12 Wood Sinatra																	
	Neocompact Texture	NC16 Linen Pure									●								
		NC18 Night Garden				●P						●	●P						
		NC19 White Garden			●F														
	Panel Stainless	ST01 St St Base				●	●					○			○	○	○	○	○
		ST02 St St Plus				○	○					●			●	●	●	●	●
	Others	Without cladding		○	○	○	○	○	○	○	○	○	○	○	○	○	○	○	○
		Tip-up seat		○	○	○	○	○	○	○	○	○	○	○	○	○	○	○	○
2 Entrances or 'Through car' for 180, 'Front/Adjacent' for 90&270			○	○	○	○	○	○	○	○	○	○	○	○	○	○	○	○	

CONTROL PANELS AND INDICATORS

CAR INDICATOR	Dot-matrix		●	●	●	●	●												
	TFT							●	●	●	●	●	●	●	●	●	●	●	
	Car direction arrows		●	●	●	●	●	●	●	●	●	●	●	●	●	●	●	●	
	Overload indicator (buzzer & light)		●	●	●	●	●	●	●	●	●	●	●	●	●	●	●	●	
	Direction arrows on entrance return		○	○	○	○	○	○	○	○	○	○	○	○	○	○	○	○	
	Car gong		○	○	○	○	○	○	○	○	○	○	○	○	○	○	○	○	○
	Voice synthesizer		○	○	○	○	○	○	○	○	○	○	○	○	○	○	○	○	○
Inductive acoustic coupler		○	○	○	○	○	○	○	○	○	○	○	○	○	○	○	○	○	
CONTROL PANEL MATERIAL	ST01 St St Base		●	●	●	●	●	○	○	○	○	○	○	○	○	○	○	○	
	ST02 St St Plus		○	○	○	○	○	○	○	○	○	○	○	○	○	○	○	○	
CAR PUSHBUTTONS	Door close pushbutton		○	○	○	○	○	○	○	○	○	○	○	○	○	○	○	○	
	Braille pushbutton		●	●	●	●	●	●	●	●	●	●	●	●	●	●	●	●	
	Key switch pushbutton (Standard or eurocylinder)		○	○	○	○	○	○	○	○	○	○	○	○	○	○	○	○	
	External call cancelling		○	○	○	○	○	○	○	○	○	○	○	○	○	○	○	○	
	Coded call		○	○	○	○	○	○	○	○	○	○	○	○	○	○	○	○	
LANDING INDICATOR	7 Segment		○	○	○	○	○	○	○	○	○	○	○	○	○	○	○	○	
	Dot-matrix		●	●	●	●	●	●	●	●	●	●	●	●	●	●	●	●	
	Next lift indicator		○	○	○	○	○	○	○	○	○	○	○	○	○	○	○	○	
	Landing gong		○	○	○	○	○	○	○	○	○	○	○	○	○	○	○	○	
LANDING PUSHBUTTONS	Key switch pushbutton (Standard or eurocylinder)		○	○	○	○	○	○	○	○	○	○	○	○	○	○	○	○	
	Wall pushbutton		○	○	○	○	○	○	○	○	○	○	○	○	○	○	○	○	

MIRRORS

MIRRORS	MT (Mirror 3/4 narrow)		●F	●F	●F	●F	●F	●F	●F	●F	●F	●F	●F	●F		●F		●F
	MW (Mirror 3/4 wide)															●F		●F
	Rear-view mirror (EN 81-70)		○	○	○	○	○	○	○	○	○	○	○	○	○	○	○	○
FINISH	O1 Clear		●	●	●	●	●	●	●	●	●	●	●	●	●	●	●	●

HANDRAILS

	HR04 (Stainless steel pipe)		●L	●L	●L	●L	●L	●L	●F/L	●F/L	●F/L	●F/L	●F/L	●F/L	●L	●F/L	●L	●L
--	-----------------------------	--	----	----	----	----	----	----	------	------	------	------	------	------	----	------	----	----

FINISHES

SKIRTINGS	SK01 Anodized Aluminium (St St finish)		●	●	●	●	●	●	●	●	●	●	●	●	●	●	●	●
DOOR MATERIALS (car and landing)	ST01 St St Base		●	●	●	●	●	○	○	○	○	○	○	○	○	○	○	○
	ST02 St St Plus		○	○	○	○	○	○	○	○	○	○	○	○	○	○	○	○
	Primed sheet (landing door)		○	○	○	○	○	○	○	○	○	○	○	○	○	○	○	○
DOOR PANEL TYPE	Standard panel (not big vision)		●	●	●	●	●	●	●	●	●	●	●	●	●	●	●	●

FLOORS

SC-PVC HIGH	SC01 Red Cherry																	
	SC03 Grey Ice							●		●			●					
	SC04 Grey Storm		●	●			●		●		●				●			●
	SC05 Grey Silver				●	●												
	SC06 Beige Sand																●	
OTHERS	Prepared for granite		○	○	○	○	○	○	○	○	○	○	○	○	○	○	○	○
	Prepared for PVC		○	○	○	○	○	○	○	○	○	○	○	○	○	○	○	○

Orona 3G Plus

Ceilings and lighting - Automatic lighting switch-off included

MODEL

Fluorescent lights



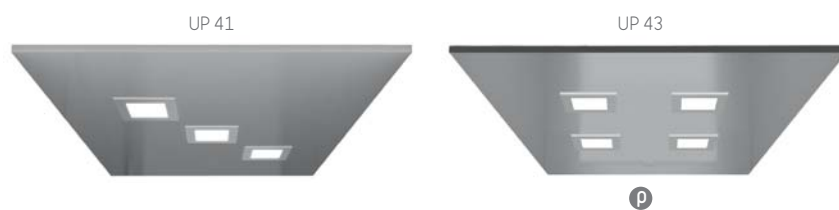
LED spotlights + Fluorescent lights



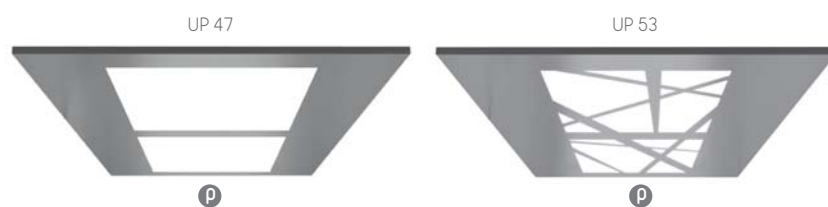
LED Spots



LED Panel (200 x 200 mm)



LED Panel (600 x 600 mm)



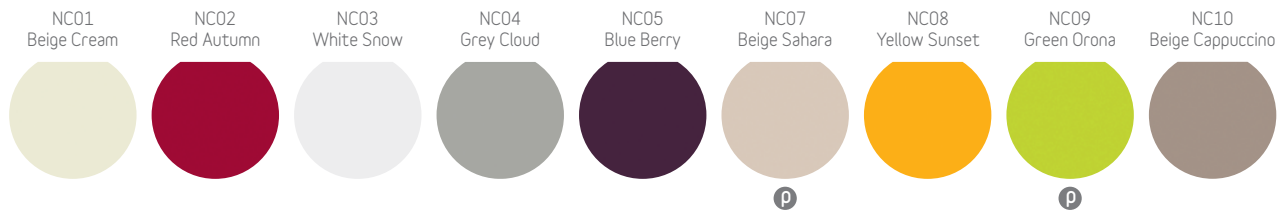
OTHERS

- Emergency hatch
(UP37- UP41)

- Fan

Car walls

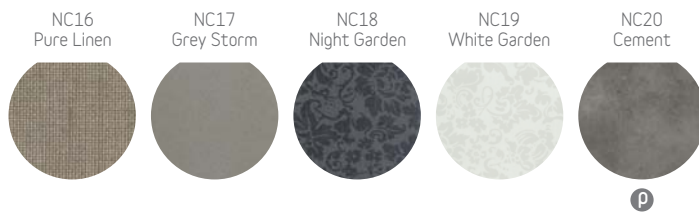
NEOCOMPACT COLOUR



NEOCOMPACT WOOD



NEOCOMPACT TEXTURE



PANEL STAINLESS



OTHERS

- Without cladding
- Tip-up seat
- 2 Entrances or 'Through car' for 180, 'Front/Adjacent' for 90&270

Control panel

Car indicator

Optional double car control panel



7 segment



d



p

Dot-matrix



d

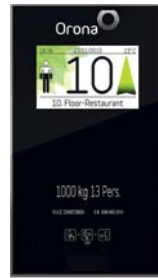


p

TFT



d



p

Direction arrows on entrance return



OTHERS

- Car direction arrows
- Overload indicator (buzzer & light)
- Car gong
- Voice synthesizer
- Inductive acoustic coupler

Landing indicator

7 segment



d



p

Dot-matrix



d



p

TFT



d



p

OTHERS

- Next lift indicator
- Landing gong

p Only available in Public range

d Only available in Domo range

Car pushbuttons

Orona Braille circular model



OTHERS

- Door close pushbutton
- Key switch pushbutton (Standard or eurocylinder)
- External call cancelling
- Coded call

Orona 3G Series pushbuttons are water-resistant (IPX3 under EN 60529) and have fully passed the impact and fire tests defined in the EN 81-71 standard.

For enhanced anti-vandalism resistance needs (Category 1), Orona offers its comprehensive PPSS O3G anti-vandalism solutions, which fully complies with the EN 81-71 standard (pushbuttons, displays, doors, lighting, ceilings, walls, floors, mirrors, enclosures, etc.).

Landing pushbuttons

Pushbutton suited to the selected control (1 or 2 pushbuttons)



d



p

Key switch pushbutton (standard or eurocylinder)



d

p

Wall pushbutton



d

p

Mirrors

MH (Mirror 1/2)

MT (Mirror 3/4 narrow)

MW (Mirror 3/4 wide) **p**

Rear-view mirror (EN 81-70)

FINISH

01 Clear

02 Smoked

Bumrails

Wood

Stainless steel

PVC

Double bumrail

Skirtings

SK01 Anodized Aluminium (St St finish)

SK02 Lacquered Aluminium

Handrails

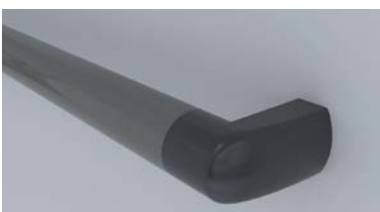
HR01 (Aluminium pipe)



HR02 (Aluminium pipe)



HR03 (Aluminium pipe)



HR04 (Stainless steel pipe)



p Only available in Public range **d** Only available in Domo range

Control panel material and/or ceiling and/or doors (car and landing)



Floors

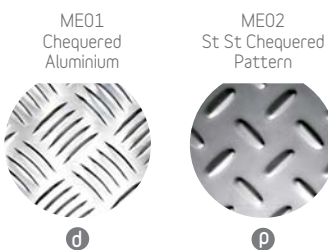
SC-PVC HIGH



SW CERAMICS · Available subject to dimensions



ME-OTHER



OTHERS

- Prepared for granite (23 mm)
- Prepared for PVC (23 mm or 3 mm in restricted pits)



Orona

- 1 out of every 10 new lifts in Europe is Orona
- More than 100 countries have Orona products installed
- 250,000 lifts worldwide with Orona technology
- First company in the sector worldwide certified in Eco-design (ISO 14006)

Orona 3G

- Aesthetic solutions
- Technical solutions

