

Orona 3G

# X-37C

Car Lifts

## Hydraulic drive solutions for heavy and/or delicate loads

Special hydraulic solution for car lifts.  
Robustness and reliability.

### General specifications

Load / Capacity	3,500 to 5,000 kg
Speed	0.2 - 0.5 m/s
Maximum travel	21 m
Maximum floors served	7 floors
Entrances	1 front / 2 open through
Drive system	Hydraulic
Controller	ARCA II controller, low energy consumption multiprocessor
Door types	Automatic side-opening / Automatic central-opening
Clear door opening	From 2,200 to 2,900 mm (in 100 mm increments)
Door height	2,000 / 2,100 / 2,200 / 2,300
Car dimensions	Parametric car dimensions
Internal car height	2,200 / 2,300 / 2,400 / 2,500
Aesthetic solutions	Heavy loads Aesthetics

Standard    Optional



#### 1 HYDRAULIC LIFTS

The hydraulic systems, renowned for their long life cycle, are very versatile and offer convenient solutions to heavy load requirements or reduced shaft spaces.



#### 2 PARAMETRIC/FLEXIBLE

Flexible car and door configurations ensure available shaft dimensions can be optimised.



#### 3 ROBUST LIFT CAR

Provides greater comfort during lift travel, with reduced vibration and noise.



#### 4 CARS

Special car dimensions, with extra depth and wider doors. Designed with reinforced panels and floors for multiple and intensive uses.



ECO-EFFICIENCY



ADAPTABILITY



DESIGN AND ACCESSIBILITY



CONTROL AND SAFETY

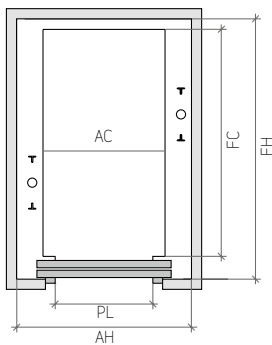
# Standard dimensions

Load / Capacity		Car				Lift shaft *				
Speed	Q Load	AC Width	FC Depth	PL Clear opening	Doors Type <sup>2</sup>	Entrances	AH <sup>4</sup> Min. width	FH <sup>3</sup> Min depth	HF Min. pit	HUP <sup>5</sup> Headroom
0.2-0.5 m/s	3,500 kg	2,300	5,000	2,200 - 2,900	PL < 2,200 MM	1	3,100	5,270	1,100	3,450
	4,000 kg	2,500	5,000			2x180 <sup>0</sup>		5,390		
		2,700	4,800			1	5,270			
	4,500 kg		2,700			6,000	2x180 <sup>0</sup>	5,390		
		5,000 kg	3,000			5,800	1	3,500		
	2x180 <sup>0</sup>						5,190			
	1	3,800	6,270							
	2x180 <sup>0</sup>		6,390							
1	6,070									
2x180 <sup>0</sup>	6,190									

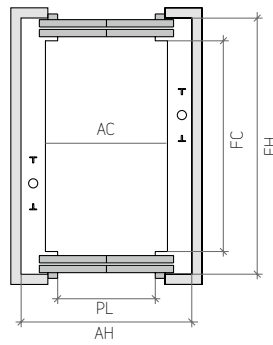
- The possible car dimensions vary by 50 mm increments only
- Two and three panel telescopic door also possible
- Shaft depth with door tracks projecting 40 mm on the landing and 90 mm sills
- Minimum shaft width for MM doors. May vary according to the clear opening and type of doors
- HUP for internal car height (HC) of 2,200 mm  
HUP will be reduced by 70 mm for LED lighting  
MM - Six panel central door  
\* Minimum plumb measurements

## Layout

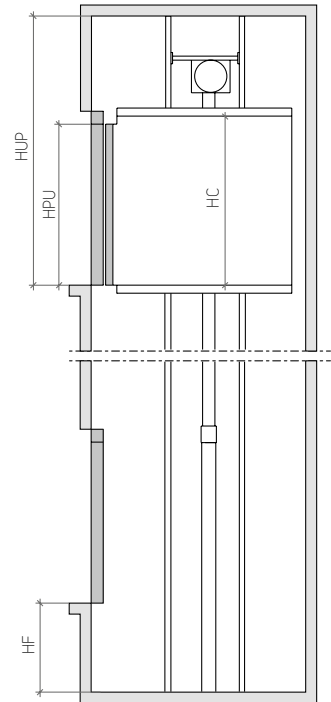
1 ENTRANCE



2 ENTRANCES (OPEN THROUGH)



VERTICAL SECTION



## Customised car dimensions

Car width																			
	□	□	#	#	#	+	+	-	-	3,000									
#	#	#	+	+	+	-	-	-		2,700									
#	+	+	+	+	-	-	-			2,500									
+	+	+	-	-	-	-				2,300									
Car depth	6,000	5,800	5,500	5,300	5,000	4,800	4,500	4,300	4,000	3,800	3,500								
Clear door opening											2,100	2,200	2,300	2,400	2,500	2,600	2,700	2,800	2,900

— = 3,500 - 3,950 kg / + = 4,000 - 4,450 kg / # = 4,500 - 4,950 kg / □ = 5,000 kg

Note: Car width and depth variable, in increments of 50 mm.  
For simplification, table samples show increments of 100 mm.